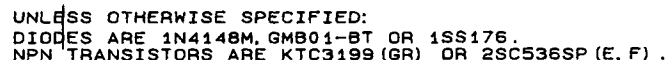


HOT

COLD



TVCR19E1

DY
DY-YOKE

PB-AUDIO SIGNAL

REC-AUDIO SIGNAL

PB-Y SIGNAL

PB-C SIGNAL

REC-Y SIGNAL

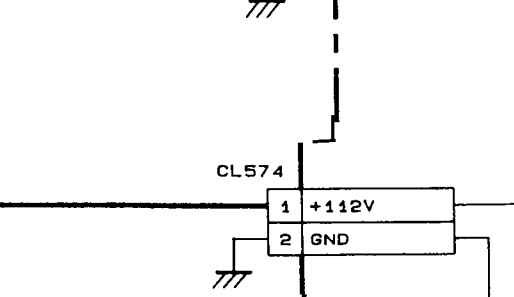
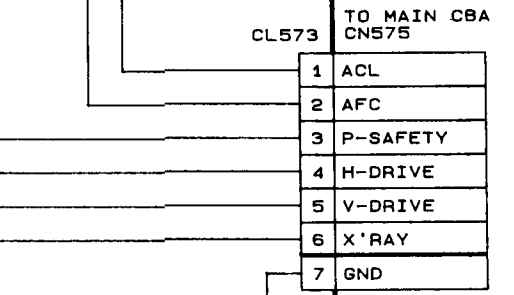
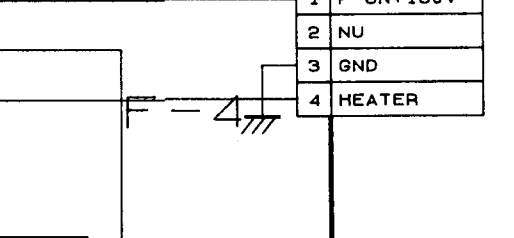
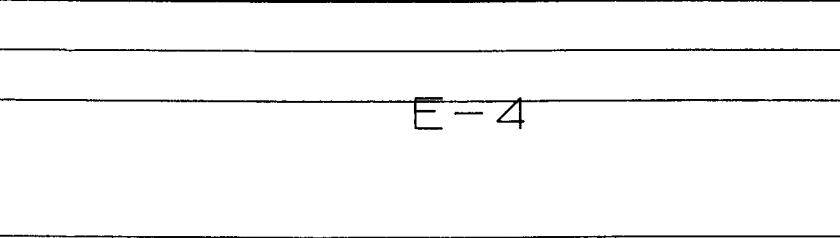
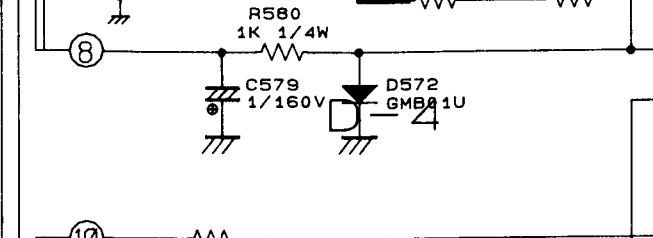
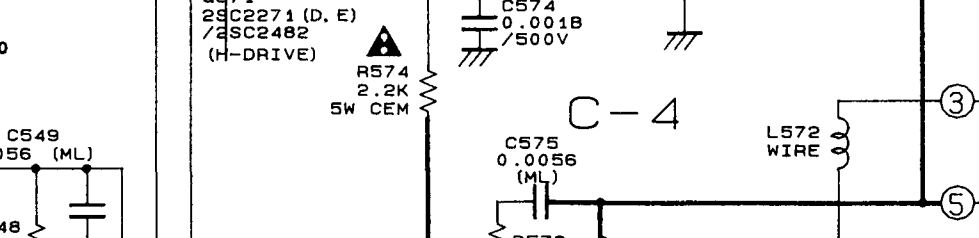
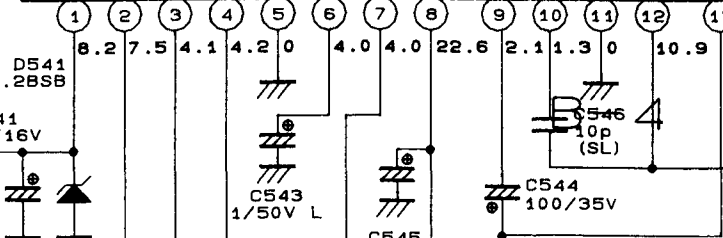
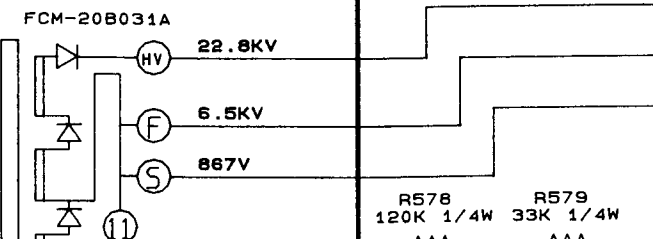
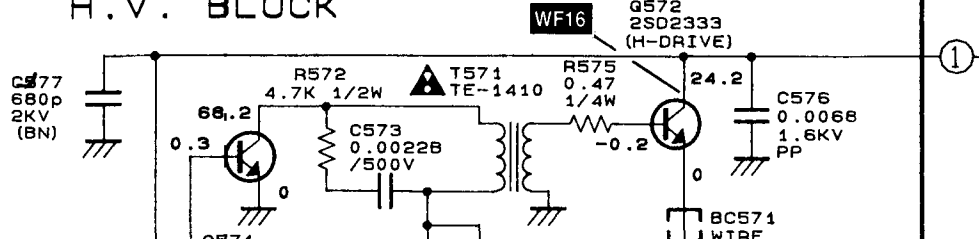
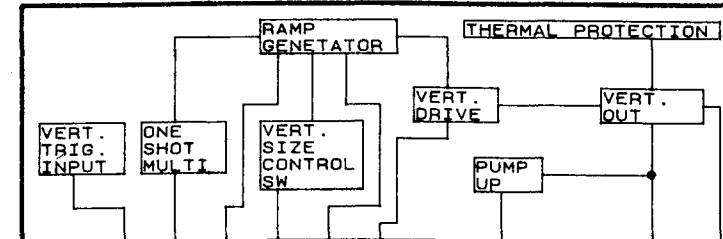
REC-C SIGNAL

IC541 LA7837 (VERTICAL DEFLECTION CONTROL)

H.V. BLOCK

T572 FCM-20B031A

H/V CBA

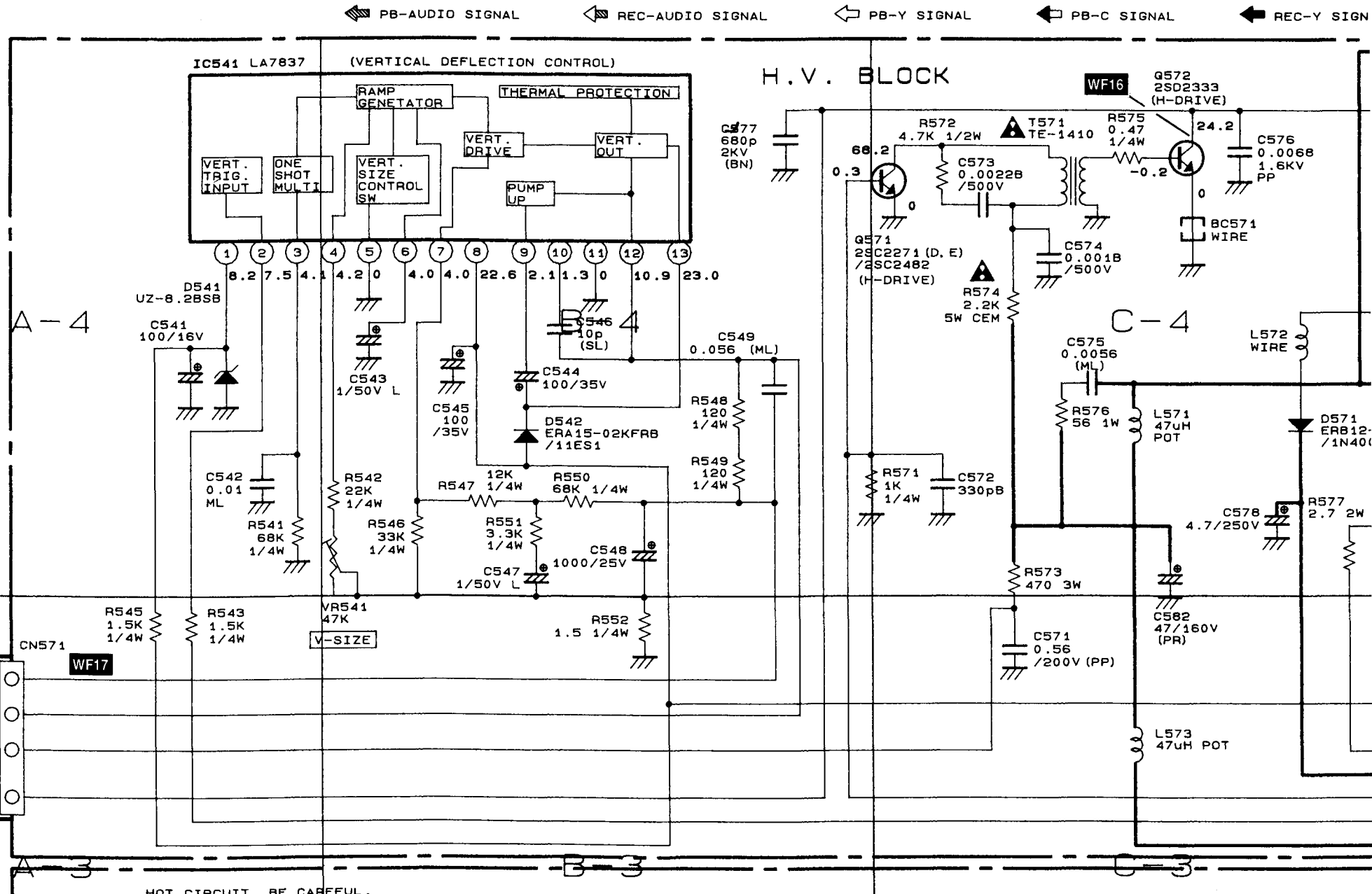


1. DO NOT USE THE PART NUMBERS SHOWN ON THIS DRAWING FOR ORDERING. THE CORRECT PART NUMBERS ARE SHOWN IN THE PARTS LIST, AND MAY BE SLIGHTLY DIFFERENT OR AMENDED SINCE THIS DRAWING WAS PREPARED.
2. TO MAINTAIN ORIGINAL FUNCTION AND RELIABILITY OF REPAIRED UNITS, USE ONLY ORIGINAL REPLACEMENT PARTS WHICH ARE LISTED WITH THEIR PART NUMBERS IN THE PARTS LIST SECTION OF THE SERVICE MANUAL.

"●" = SMD

MODE : SP/REC

THE SAME VOLTAGE FOR BOTH PLAY & REC MODES.



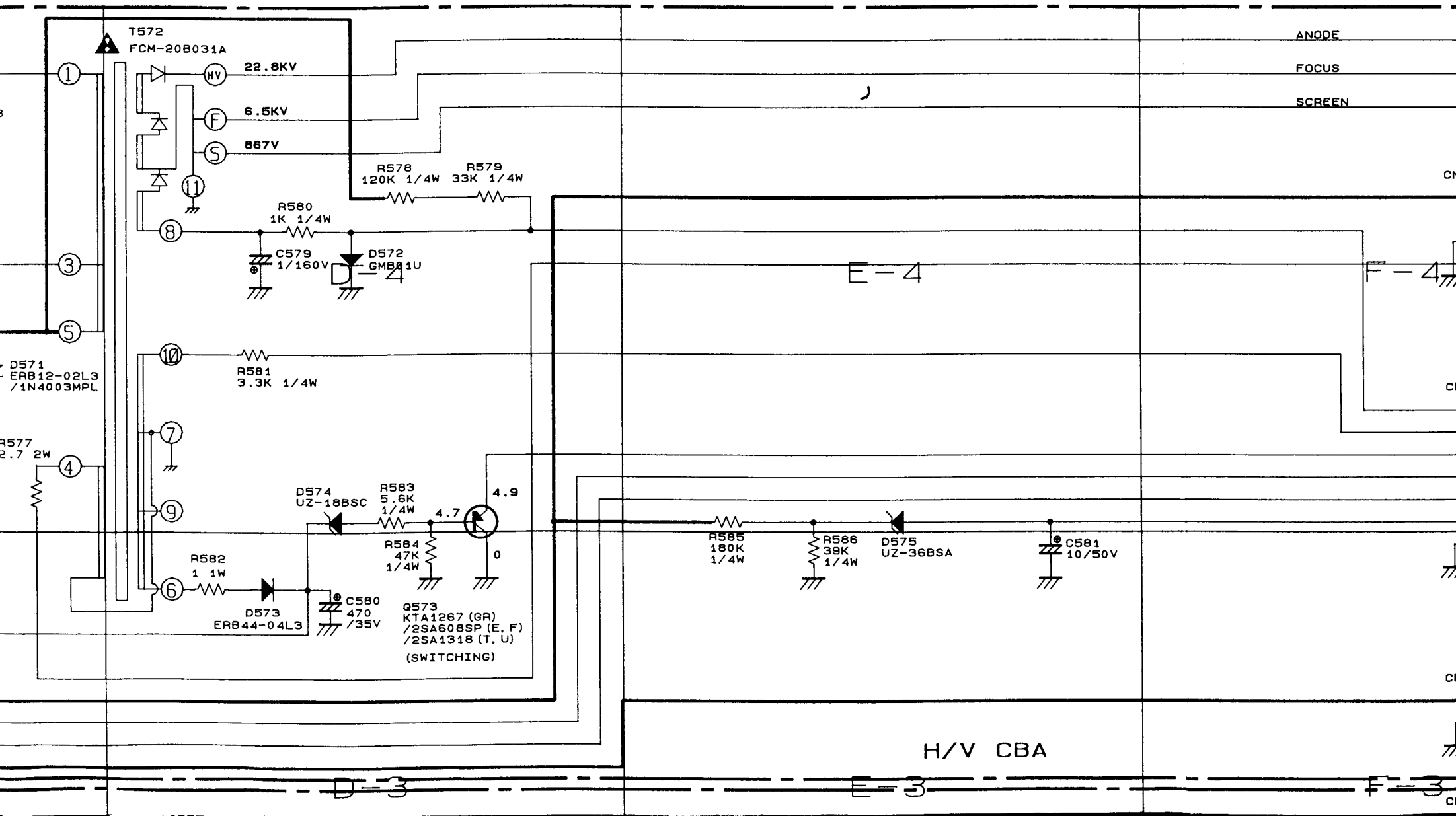
① 5.0 ② ③ 5.0 (2.5)
 FOR INDICATES THAT THE VOLTAGE
 MODES. IS NOT CONSISTENT HERE.

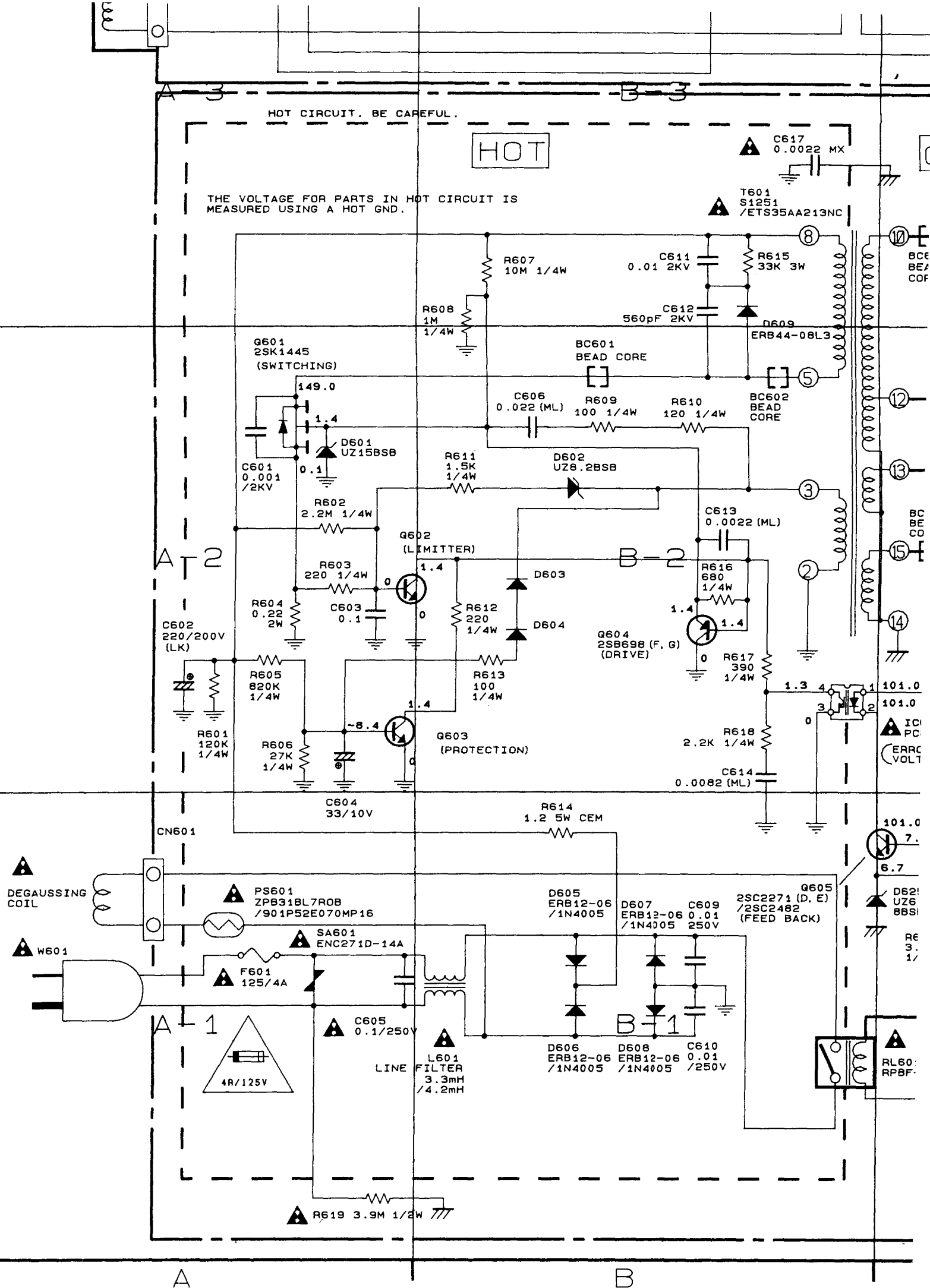
1. PREFIX SYMBOL "CN" MEANS CONNECTOR.
 (CAN DISCONNECT AND RECONNECT.)
2. PREFIX SYMBOL "CL" MEANS WIRE-SOLDER HOLES OF THE PCB.
 (WIRE IS SOLDERED DIRECTLY.)

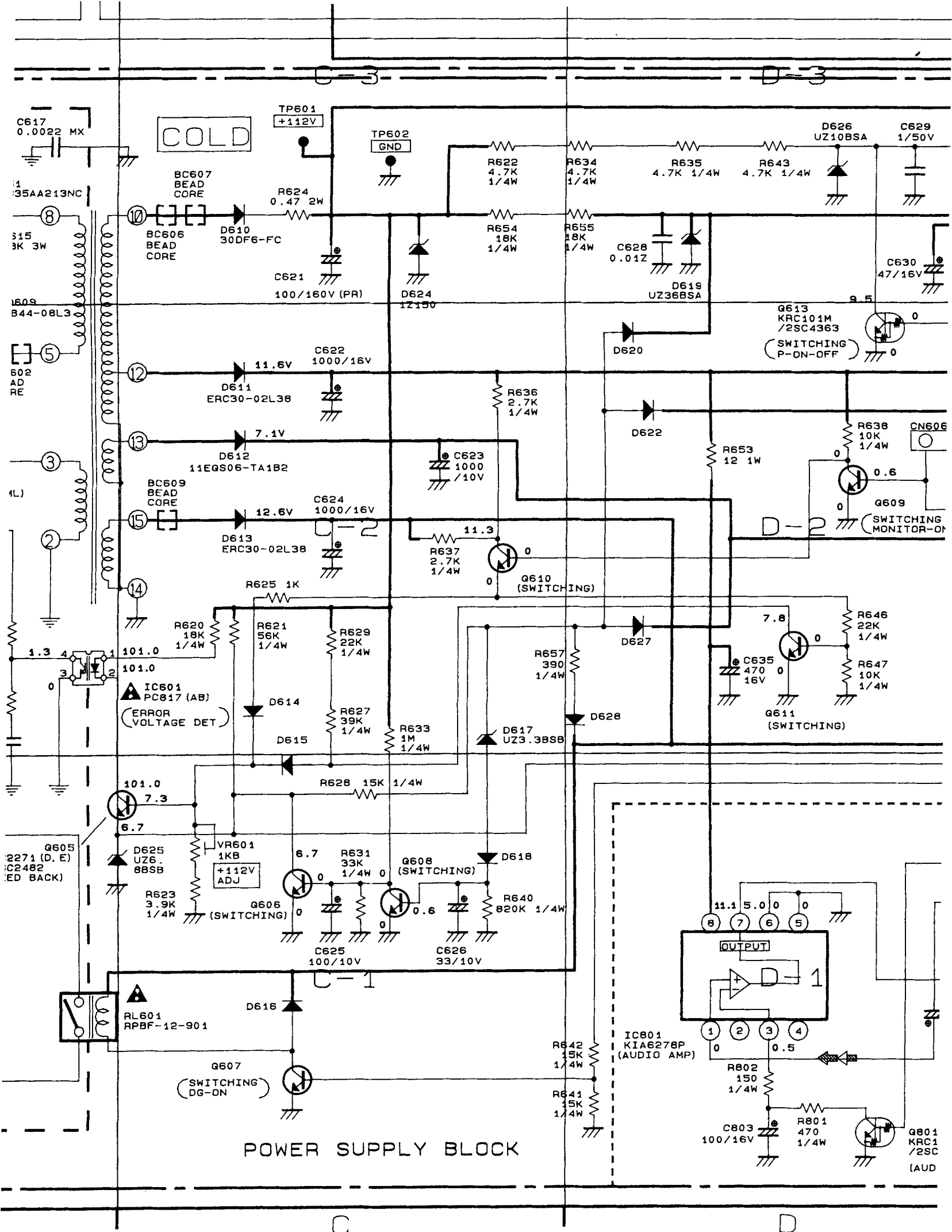
- ① : INDICATES A TEST POINT WITH A JUMPER WIRE ACROSS A HOLE IN THE PCB.
- ⊠ : USED TO INDICATE A TEST POINT WITH A COMPONENT LEAD ON FOIL SIDE.
- ⊙ : USED TO INDICATE A TEST POINT WITH NO TEST PIN.
- : USED TO INDICATE A TEST POINT WITH A TEST PIN.

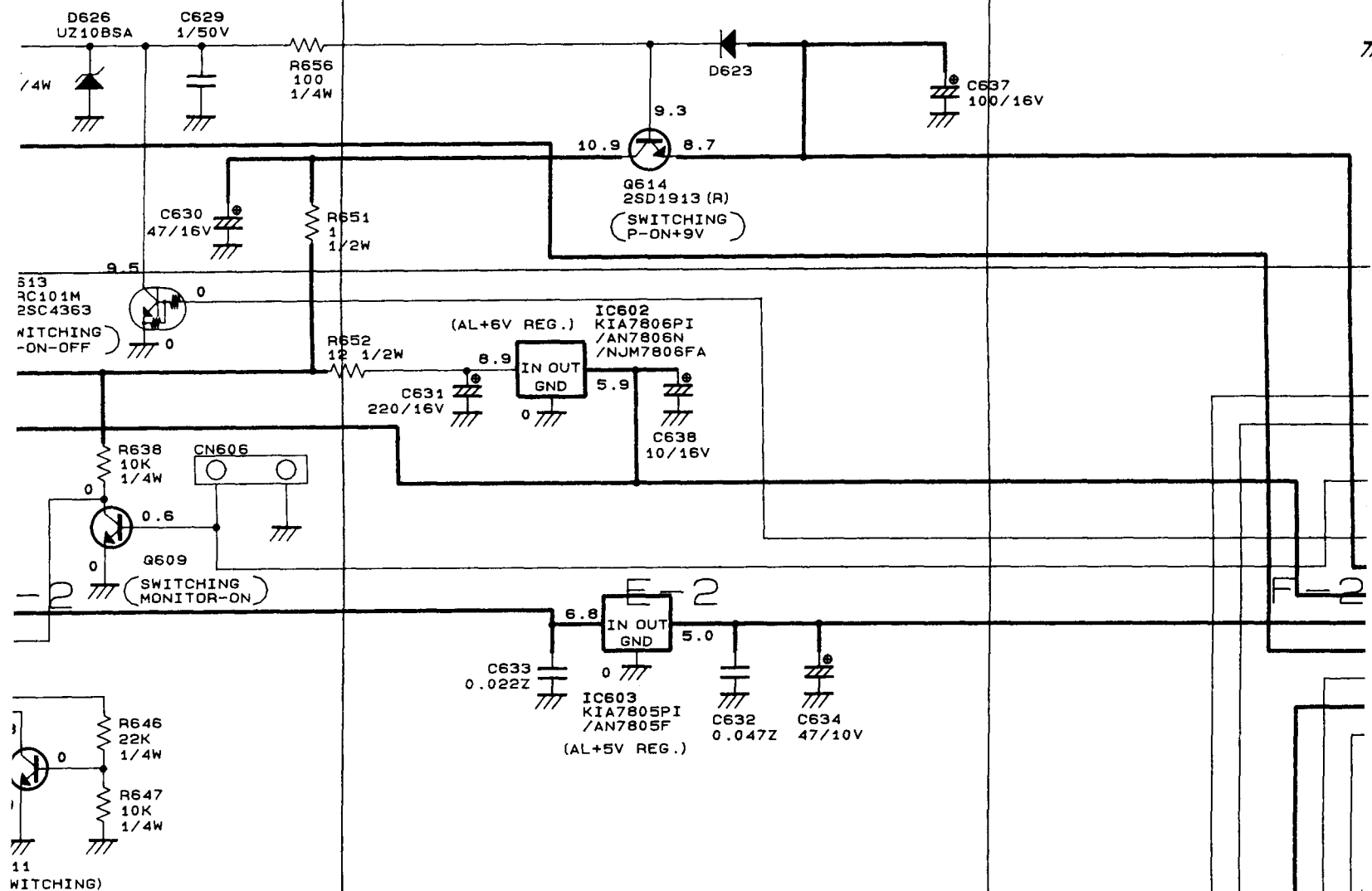
Y SIGNAL

REC-C SIGNAL

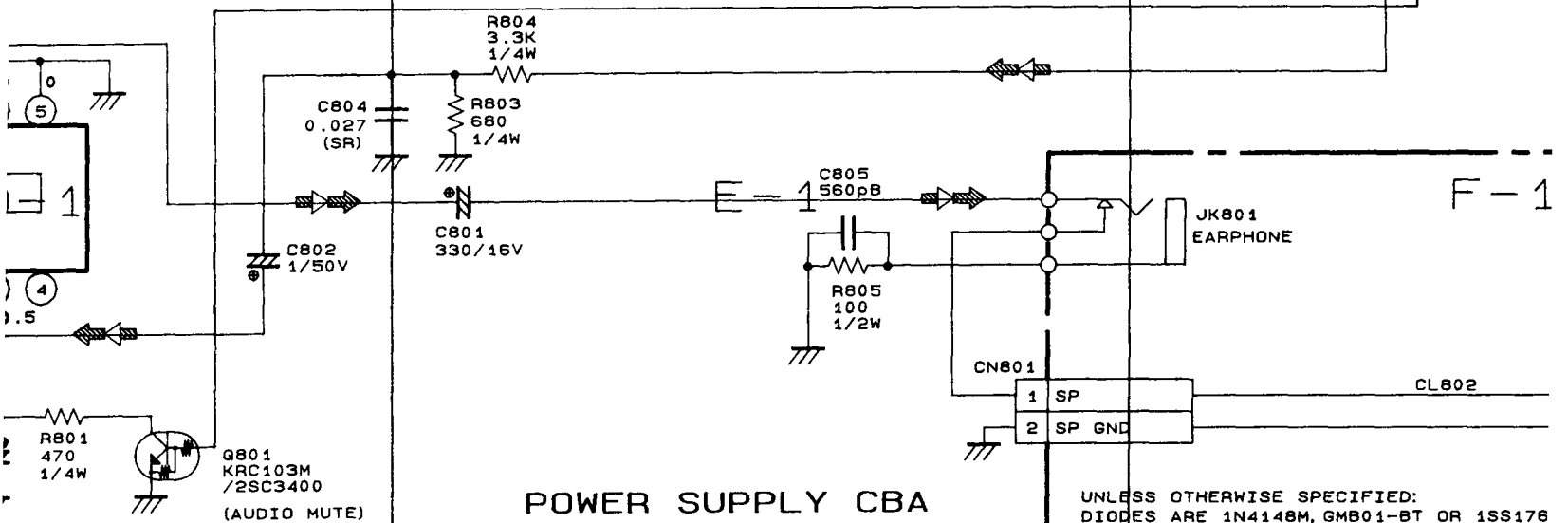








AUDIO AMP BLOCK



UNLESS OTHERWISE SPECIFIED:
 DIODES ARE 1N4148M, GMB01-BT OR 1SS176
 NPN TRANSISTORS ARE KTC3199 (GR) OR 2S

POWER SUPPLY
SCHEMATIC DIAGRAM
PARTS LOCATION GUIDE

Ref. No.	Position
ICS	
IC601	C-2
IC602	E-2
IC603	E-2
IC801	D-1
TRANSISTORS	
Q601	A-2
Q602	B-2
Q603	B-2
Q604	B-2
Q605	C-1
Q606	C-1
Q607	C-1
Q608	C-1
Q609	D-2
Q610	C-2
Q611	D-2
Q613	D-2
Q614	E-3
Q801	D-1
CONNECTORS	
CN601	A-1
CN602	F-3
CL603	F-2
CN606	D-2
CN801	E-1
CL802	F-1
VARIABLE RESISTORS	
VR601	C-1
TEST POINTS	
TP601	C-3
TP602	C-3

